

KM Cattle Company Top Cut Bull Sale— Sat. February 18, 2017— 1:00 PM

KM Cattle Company Top Cut Bull Sale

Open House



SATURDAY, FEBRUARY 18TH, 2017

**SALE
STARTS @
1:00 P.M.**



**“BETTER
BUSINESS
BULLS”**



Real World Genetics with YOU, your CATTLE, and the CONSUMER in mind.

KM Cattle Top Cut Open House Bull Sale

Saturday Feb. 18th 2017

At the Farm

30436 335th St.

Coon Rapids, IA 50058

Sale Contacts

Kent Musfeldt 712.210.1170

Kyle Musfeldt 712.210.6222

Sale Itinerary

Cattle are always available for viewing ahead of sale. Give us a call. We encourage this so that we can better assist you with your bull needs.

12:00 PM— Complimentary Lunch

1:00 PM— Bid-off begins

Consultants/Representatives

Tom Judy 641.295.0300

Adam Conover 816.676.8560

Accommodations

Boulders Inn & Suites, Manning, IA

712.655.4000

Super 8, Carroll, IA

712.792.6666

Terms and Conditions

KM Cattle Co. assumes no liability in case of accident. All cattle will sell under the terms and conditions recommended by the American Angus Association.

Semen Evaluation

All bulls have had a breeding soundness exam performed on 1/26/17 by Dr. Shawn Nicholson, Stuart Vet Clinic.

KM Cattle Semen Interest

KM Cattle retains 1/2 semen interest in all bulls selling. Buyer receives full possession and full salvage value of the bull.

Video of Bulls

16 of the bulls have been pictured and video'd. Due to time and weather constraints, we were unable to get all bulls video'd even though many more merit it. These videos can be found on our website, www.kmcattle.com, on the Bull Sale Tab. Contact us if you need help viewing these videos.

Phone Bids

Phone bids will be handled in a confidential manner. If you are unable to attend the sale, please contact Kent or Kyle so we can assist you during the sale to make your purchase.

Freeze Brands

All bulls have been freeze branded on the left hip.

Volume Discounts

Volume discounts will be offered starting on the 3rd bull purchased— 3% off on the 3rd bull; 4% off on the 4th bull; and increasing 1% per additional bull purchased, up to 10% off on the 10th bull

Sale Format

Bulls will have an affordable base price that will be determined ahead of sale day. Buyer numbers will determine sale order. When we call buyer #1, they will announce what bull they would like to purchase. If other buyers are interested in the same bull we will go in \$200 increments until the bull is sold. If no other buyer raises the base bid then the bull is sold at the base price. Buyer #1 will hold the floor until he is done selecting bulls. We will do this until we have either sold out of bulls or worked through the initial list of buyers. Any bulls remaining will be available on a first come/first serve basis at the base price.

Dear Angus Friends & Enthusiasts,

We would like to welcome everyone and invite you to join us on Saturday, February 18th. We have decided to host an open house in celebration of our 50 year Historic Angus Herd Award. Sale format will still be the same as we have done for the last 5 years but we will just be right there in person instead of over the phone on closing day.

We are really excited about this entire set of bulls. There are some really interesting powerful breed impacting type bulls at the top that merit stud and breeder attention alike and top notch bulls for the progressive commercial cow calf producer that needs calving ease, power, growth, soundness, functionality, great maternal traits, and top notch carcass traits. Our breeding program focuses on real world, sound and functional cattle that excel for calving ease, growth, carcass, maternal, and feed efficiency, yet are still in a powerful phenotypic package. These bulls have never been creep fed and were developed on a grower ration, not ever pushing the bulls hard. They are developed this way, to maximize their longevity and fertility. This also allows us to be able to truly analyze the performance of our cows.

With the tools we have available to us today, it really pays to invest in genetics with more genetic merit as the price difference between cattle with more genetic merit and those with less, continues to widen. So it really does pay to position yourself with elite Angus genetics. As long as we communicate the genetics, cattle with elite genetic merit will sell themselves, when sale day comes.

We hope to see you on Saleday— February 18th and let us know if you have any questions ahead of time. We encourage herd visits anytime so that we can better assist you 1 on 1 with your bull needs and making sure that you find that right bull for your needs.

Thanks and see you on the 18th!

KM Essential 6003 AAA +18416796



A truly elite herd sire prospect who is a maternal brother to the Select Sires standout, JMB Traction 292. He is an extremely powerful Upward son out of one of the breed's most elite and proven donors, JMB Emulota 013. A stout featured, heavy muscled individual with great phenotype, excellent feet and is very sound in his structure. His dam, who records over \$300,000 in direct progeny sales, records BW 3@98; WW 3@113; YW 3@108; %IMF 15@100; UREA 15@104; and has 6 daughters in production with a combined NR of 104. Maternal granddam is a pathfinder. Take note of his curve bending EPD profile that places him in an elite position within the breed for many different traits including performance and end product merit. He is truly one of the best and most powerful bulls we have ever been around. We have a full sister and 2 maternal sisters (by Sitz Top Game) at home that are truly some of the best females we have been around. For those of you that saw his full sister in Denver this January, he is the male version of her. The Emulota cow family has taken the National Western Stockshow by storm as of the last few years and several siblings to Essential have been top sellers for anywhere from \$15,000 to \$31,000 for half interest. He has 3 maternal brothers in major AI stud. If you are looking for an elite power bull from one of the very best cows in the breed, then you NEED to see this bull.



Dam of Essential —Sold for \$45,000—1/2 interest



Full Sister @ Bobcat Angus Sold for \$21,000



Full Sister @ Pollard Farms Sold for \$15,000



Mat. Sister @ Werner Angus Sold for \$31,000— 1/2 interest



JMB Traction— Select Sires Maternal Brother



Baldco Black Gold— Beef 360 Maternal Brother



Mat. Sister @ Idland Angus Sold for \$17,000

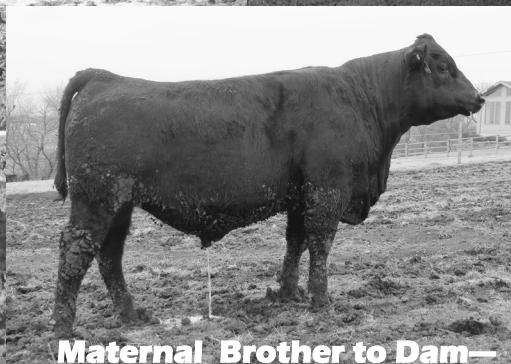
D.O.B: 1/5/16
Sire: Upward
MGS: Predominant
BW— 82 lbs
WWR— 120
YWR— 111
UREA ratio— 116

KM Barnstormer 6017

AAA 18463707



D.O.B: 1/30/16
Sire: Rampage
MGS: Upward 15X
BW— 83 lbs
WWR— 116
YWR— 115
Feed test ratio— 117
%IMF ratio— 126
UREA ratio— 125
Rib fat ratio— 85
Rump fat ratio— 97



**Maternal Brother to Dam—
He also sells as 6025**



Dam



Mat. Sister by GAR Prophet— KM Donor

Barnstormer is one of the most complete bulls we have ever raised. He is a super deep, soft made, long bodied, athletic and flexible, well balanced bull who has superb muscle, bone, base width and soundness. He is an excellent footed bull. He is the type of bull that can make a major impact within the breed. His dam, KM Lantz Blackcap 90700-213 is a picture perfect Angus cow with loads of depth, base width, and breed character. She records WW 3@115; YW 3@110; UREA 3@111; %IMF 3@109. She is set to earn pathfinder status when the pathfinder report comes out this spring. Pathfinder granddam records WW 6@109; YW 4@105; %IMF 3@104; UREA 3@110. This cow family has never missed and they have perfect udders, and perfect sound feet and legs. A maternal sister by GAR Prophet entered the KM Donor pen as a bred heifer doing IVF work. He is one of the best bulls we have ever raised and he has a super consistent and powerful cow family to back him up. You would be really hard pressed to find a bull with his kind of phenotype that also has the data that this bull has in terms of his AHIR data, genomics, and EPD's. He has jumped through all the hoops in every way you look at him— Phenotypically, genomically, by actual data, cow family. He is a no holes kind of bull, but he is more than that— he is the home run that we dream of producing. He is what we are aiming to produce at KM Cattle Company.

KM On Track 6011

AAA 18462992



On Track is an extremely stout and powerful, yet stylish, and well balanced son of JMB Traction. His pathfinder dam is one of the best cows on the farm. She is a picture perfect kind of cow who records WW 4@107; YW 4@105, UREA 4@103. A calving ease Traction son who brings in growth, and carcass ranking near the top of the breed. Big footed, heavy muscled, deep and soft made, super docility, stylish and attractive, and length of body are just a few of the traits we really admire on this bull. A power bull on the ground who merits the attention and is a favorite of all who see him.



Mat. Brother by GAR Prophet, 2016 2nd top seller



Dam



Maternal Grand-dam

D.O.B: 1/15/16

Sire: Traction

MGS: Bismarck

BW- 74 lbs

WWR- 106

YWR- 103

UREA ratio- 108

KM Revolution 6013

AAA 18463694



Another outstanding Quaker Hill Rampage son who comes from one of the breed's leading cow family's, the RB Lady's. He is an extremely long bodied, stout made, well structured bull who will offer breed leading growth coupled with breed leading calving ease, ranking in the top 4% for CED and 1% for both WW and YW. His young Broken Bow dam is a super mama for us recording BW 2@91; WW 2@110; YW 2@104. If you are looking for a calving ease bull that will add performance and end product merit, here is your bull!



Mat. Brother by Full Power A top seller in 2016



Same Cow Family as the famous R B Lady Standard 305-890

D.O.B: 1/22/16

Sire: Rampage

MGS: Broken Bow

BW- 70 lbs

WWR- 110

YWR- 104

UREA ratio- 114

Comrade x Pamela Pride Flush Brothers

KM Caucus 6033 AAA +18477576



D.O.B: 3/6/16
 Sire: Comrade
 MGS: YH Yahara
 BW- 75 lbs
 WWR- 113
 YWR- 108
 %IMF ratio- 108
 UREA ratio- 105

KM Caucus 6032 AAA +18477575



D.O.B: 3/15/16
 Sire: Comrade
 MGS: YH Yahara
 BW- 72 lbs
 WWR- 108
 YWR- 103
 UREA ratio- 112

KM Caucus 6030 AAA +18477573



D.O.B: 1/6/16
 Sire: Comrade
 MGS: YH Yahara
 BW- 76 lbs
 WWR- 93
 YWR- 97
 %IMF ratio- 100
 UREA ratio- 105

KM Caucus 6005 AAA +18477569



D.O.B: 1/6/16
 Sire: Comrade
 MGS: Yahara
 BW- 82 lbs
 WWR- 100
 YWR- 103
 %IMF ratio- 96
 UREA ratio- 102

These outstanding Comrade flush brothers are the result of one of the most successful flushes we have ever done. These 5 plus 1 more flush brother plus 2 maternal brothers by Traction all sell. 3 of our top heifers in our 2016 crop are flush mates to these bulls, whom we expect big things from. Sleep all night calving ease bulls that also bring in added growth, performance, and phenotype. They come from an outstanding pathfinder donor cow who records BW 5@96; WW 5@108; YW 5@108; %IMF 10@103; UREA 10@106. A maternal brother, KM Banjo 302, was our top selling bull in 2014 to Kraye Angus Ranch at Mullen, NE for \$9,250. The Pamela Pride Cow Family is a true maternal power cow family.



Sire- Connealy Comrade



Dam

Maternal Brother by
KM Broken Bow
 2014 Top seller to
 Kraye Angus, Mullen, NE



KM Caucus 6006
 AAA +18477571

D.O.B: 1/7/16
 Sire: Comrade
 MGS: Yahara
 BW- 85 lbs
 WWR- 97
 YWR- 98
 %IMF ratio- 125

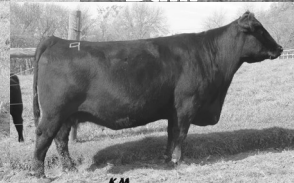


KM Gronk 6008 AAA 18463054

Sire



Dam



KM

KM

D.O.B: 1/8/16

Sire: Deer Valley Patriot

MGS: Triple E Special Addition

WWR- 116

YWR- 118

%IMF ratio- 150

UREA ratio- 103

Gronk is a tank of a bull with exceptional depth, thickness, and overall power. He is a beast. Outstanding performance from an outstanding cow family. Dam was our pick of the bred heifers at the 2011 Flag Ranch Dispersal Sale at Scottsbluff, NE. 3 maternal sisters to Gronk are retained and record a combined nursing ratio of 109. A maternal sister produced bull 6002 who sells.



Maternal Sister

KM SpotLite 6007 AAA 18463066

Sire



D.O.B: 1/8/16

Sire: A&B SpotLite

MGS: Pioneer

BW- 80 lbs

WWR- 101

YWR- 104

A growthy, rugged, long bodied, super deep bodied, calving ease specialist from a super consistent and great cow family. His dam has been a herd bull producing machine. Same cow family as the \$250,000, GAR Precision 819. The SpotLite cattle are very efficient and high gaining cattle who will excel in the feedlot. Dam records BW 2@98; WW 2@102; YW 1@104.

KM 18 Wheeler 6014 AAA 18462983



KM

D.O.B: 1/25/16

Sire: Traction

MGS: Impression

BW- 83 lbs

WWR- 101

YWR- 105

UREA ratio- 113

A stout, powerful, stylish Traction son out of the Erica cow family. Several KM Donors have come from this cow family. He is big boned, heavy muscled, wide based, deep, and very nice fronted. Cow family has perfect udders and excellent feet.



JMB Traction 292

KM Leverage 6010 AAA 18463005



KM

A super powerful standout Traction son and maternal brother to the Comrade flush (refer to previous page). Phenotypically and performance wise, he is one of the best we have raised. Twin sells as bull 6009. Dam is a pathfinder KM Donor cow. Excellent base width, bone, length, and depth of body.

D.O.B: 1/14/16

Sire: Traction

MGS: YH Yahara

BW- 78 lbs

WWR- 112

YWR- 106

KM Blue Blood 6002 AAA 18465196



Blue Blood is the most powerful, high growth son of Broken Bow that we have ever raised. He will add more frame than most Broken Bow's. His dam is an outstanding young CC&7 daughter who has a great future ahead of her. Granddam was our pick of the bred heifers at the 2011 Flag Ranch Dispersal Sale, Scottsbluff, NE. The Blue Lady cow family does it all—power, performance, muscle, depth, udders, great feet and legs, and attractive phenotype. He is super sound, deep and soft made, heavy muscled, long bodied, and very nice fronted.

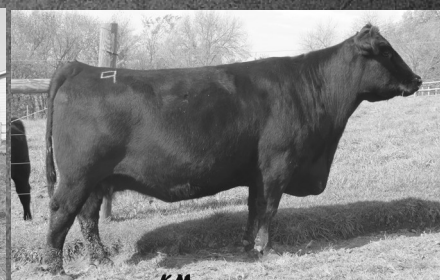
D.O.B: 1/04/16
Sire: Broken Bow
MGS: Sydgen CC&7
BW– 83 lbs
WWR– 113
YWR– 115
Feed test ratio– 111
%IMF ratio– 160
UREA ratio– 115



Maternal Brother to Dam
He also Sells!



Maternal Sister to Dam



Grand-Dam

KM Brewster 6020

AAA 18458533



D.O.B: 2/1/16
Sire: Broken Bow
MGS: Identity
BW– 76 lbs
WWR– 97
YWR– 98
%IMF ratio– 109

Brewster is a deep bodied, heavy muscled, eye appealing calving ease bull from an outstanding Koupal's Identity daughter. He has a very similar look as his sire. Dam records BW 2@ 98; WW 2@99; YW 1@105; %IMF 1@131; UREA 1@102.



Maternal Brother by GAR Momentum



KM Broken Bow 002

KM Burwell 6025

AAA 18453279



Maternal Sister– KM Donor

Burwell is a powerful Broken Bow son who brings in added performance and great maternal traits. He comes from the B/R Lantz Blackcap family. He is a maternal brother to the dam of the Barnstormer 6017 Bull. Pathfinder dam records WW 6@109; YW 5@104; %IMF 3@104; UREA 3@110.

D.O.B: 2/13/16
Sire: Broken Bow
MGS: Mandan
BW– 85 lbs
WWR– 103
YWR– 101
UREA ratio– 107

KM Broken Bow 002 (Reference)

AAA +16764044



KM

Broken Bow is a Summitcrest Complete son out of our great 0P12 donor cow. We sold him to ABS Global in 2012 and he has since proven himself and become one of the more used bulls in the breed all across the United States and even across the globe. He is a no holes, well balanced sire from both a phenotype and EPD standpoint. Broken Bow progeny excel for calving ease, muscle, base width, depth of body, and fleshing ability. They are phenotypically attractive, nice fronted, and super sound. He is a foot improver. His progeny record shows: BW 1,214@98; WW 1,222@101; YW 477@101; %IMF 316@107; UREA 315@100; and he has 133 reported daughters in production with a combined NR of 101. Reports on daughters across the country have proven the excellent udders on these high performing cows. He is one of the most popular bulls in Australia, because of his foot quality, muscle, and feed efficiency. He is a favorite of all who see him at ABS. Ranks in the top 15% for Total Profit Index coupled with reduced feed intake values through the Angus Sire Alliance. He balances high end \$W and \$B values with top 20% RADG and DMI efficiency EPDs. His first sons topped sales almost everywhere they were offered.

CED	+13
BW	-1.9
WW	+61
YW	+103
Marb	+0.68
RE	+0.68
\$W	+67.64
\$B	+132.07



Full Sister— KM Complete Princess 047
KM Donor



Full Sister— KM Complete Princess 046
KM Donor



KM Queen May 5101
Broken Bow daughter



KM Lady Jewell 5117
Broken Bow daughter



Musgrave Broken Bow 1316
James Heaton, MO



KM Banjo 302
Son— Top seller in 2014



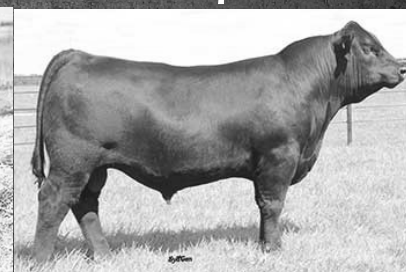
WAR Bullet Proof— Son
Wagonhammer Ranches, NE
Mill Bar Angus, NE



Spring Cove Reno— Son
Spring Cove Ranches, ID
ST Genetics, TX



Spring Cove Crossbow
Spring Cove Ranches, ID
ABS Global, WI



Syngen Broken Bow 3742
Sydenstricker Genetics, MO
Circle M Farms, MO

KM Cattle Company Top Cut Bull Sale

56	Tag: 56	KM Prophecy 56	18430011
	Tattoo: 56	Bull	Birth Date: 03/03/16

+G A R Prophet[CAF-DDF-XF]
 G A R Prophecy
 +G A R 28 Ambush 181[DDF]
 Bar 942 of 8423[AMF]
 PGA Barbara 839
 Belles Shoshoness 112

CED	BW	WW	YW	CEM	Milk	\$EN	CW	Marb	RE	Fat	\$W	\$G	YG
Acc	Acc	Acc	Acc	Acc	Acc		Acc	Acc	Acc	Acc	\$F	\$QG	\$B
+12	-1.0	+56	+92	+13	+31	-19.15	+26	+71	+14	+0.033	+61.43	+33.76	-1.36
.25	.36	.27	.26	.07	.10		.15	.19	.20	.17	+51.84	+35.12	+103.44

6004	Tag: 6004	KM Focal Point 6004	18463062
	Tattoo: 6004	Bull	Birth Date: 01/05/16

Tehama 944 R525[AMF-CAF-XF]
 A & B SpotLite 3065[OHF]
 #A & B Queen 1021[OHF]
 +KM Broken Bow 002[AMF-CAF-XF]
 KM Evergreen 4203
 +R B Evergreen 977[CAF]

CED	BW	WW	YW	CEM	Milk	\$EN	CW	Marb	RE	Fat	\$W	\$G	YG
Acc	Acc	Acc	Acc	Acc	Acc		Acc	Acc	Acc	Acc	\$F	\$QG	\$B
+13	-1.2	+58	+100	+12	+31	-22.80	+36	+1.04	+36	+0	+61.15	+46.71	+3.65
.30	.36	.27	.26	.08	.11		.16	.20	.21	.18	+58.21	+43.06	+130.66

6001	Tag: 6001	KM Broken Bow 6001	18458528
	Tattoo: 6001	Bull	Birth Date: 01/01/16

#Summitcrest Complete 1P55[AMF-CAF-XF]
 +KM Broken Bow 002[AMF-CAF-XF]
 #Summitcrest Princess 0P12
 KM Roughage Buster 93[AMF-CAF-XF]
 KM Elba 4229
 KM Objective Elba 052

CED	BW	WW	YW	CEM	Milk	\$EN	CW	Marb	RE	Fat	\$W	\$G	YG
Acc	Acc	Acc	Acc	Acc	Acc		Acc	Acc	Acc	Acc	\$F	\$QG	\$B
+13	-1.2	+63	+103	+13	+27	-18.56	+27	+95	+48	-0.002	+64.01	+48.19	+6.97
.31	.37	.28	.27	.14	.18		.18	.22	.22	.19	+60.18	+41.22	+115.42

6005	Tag: 6005	KM Caucus 6005	+18477569
	Tattoo: 6005	Bull	Birth Date: 01/06/16

#Connealy Consensus 7229[AMF-CAF-XF]
 Connealy Comrade 1385[DDF-OSF]
 Happy Gee of Conanga 919[DDC-CAF]
 Y H Yahara 756
 #SCR Pamela Pride 80786[AMF-DDF-NHF]
 SCR Pamela Pride 60867[AMF-NHF]

CED	BW	WW	YW	CEM	Milk	\$EN	CW	Marb	RE	Fat	\$W	\$G	YG
Acc	Acc	Acc	Acc	Acc	Acc		Acc	Acc	Acc	Acc	\$F	\$QG	\$B
+15	-1.1	+45	+86	+15	+32	-5.92	+28	+80	+79	+0.082	+60.05	+38.38	+8.9
.33	.44	.34	.37	.12	.20		.23	.33	.31	.32	+48.70	+37.49	+111.81

6002	Tag: 6002	KM Blue Blood 6002	18465196
	Tattoo: 6002	Bull	Birth Date: 01/04/16

#Summitcrest Complete 1P55[AMF-CAF-XF]
 +KM Broken Bow 002[AMF-CAF-XF]
 #Summitcrest Princess 0P12
 #SydGen C C & 7[AMF-CAF-XF]
 KM Blue Lady 4216
 Flag Blue Lady 00509

CED	BW	WW	YW	CEM	Milk	\$EN	CW	Marb	RE	Fat	\$W	\$G	YG
Acc	Acc	Acc	Acc	Acc	Acc		Acc	Acc	Acc	Acc	\$F	\$QG	\$B
+1	+1.5	+67	+118	+6	+26	-21.42	+42	+91	+77	-0.039	+60.79	+51.31	+10.99
.40	.44	.33	.37	.15	.21		.25	.34	.31	.33	+94.78	+40.32	+158.86

6006	Tag: 6006	KM Caucus 6006	+18477571
	Tattoo: 6006	Bull	Birth Date: 01/07/16

#Connealy Consensus 7229[AMF-CAF-XF]
 Connealy Comrade 1385[DDF-OSF]
 Happy Gee of Conanga 919[DDC-CAF]
 Y H Yahara 756
 #SCR Pamela Pride 80786[AMF-DDF-NHF]
 SCR Pamela Pride 60867[AMF-NHF]

CED	BW	WW	YW	CEM	Milk	\$EN	CW	Marb	RE	Fat	\$W	\$G	YG
Acc	Acc	Acc	Acc	Acc	Acc		Acc	Acc	Acc	Acc	\$F	\$QG	\$B
+7	+1.0	+46	+86	+12	+31	-3.02	+30	+78	+84	+0.081	+59.12	+38.26	+1.32
.33	.44	.34	.37	.12	.20		.23	.33	.31	.32	+51.97	+36.94	+119.53

6003	Tag: 6003	KM Essential 6003	+18416796_[OSF]
	Tattoo: 6003	Bull	Birth Date: 01/05/16

#Connealy Onward[AMF-CAF-XF]
 #Sitz Upward 307R[AMF-CAF-XF]
 Sitz Henrietta Pride 81M
 #+S A V 004 Predominant 4438[AMF-CAF-XF]
 JMB Emulota 013[DDF]
 #BAR S Emulota 5426[DDF]

CED	BW	WW	YW	CEM	Milk	\$EN	CW	Marb	RE	Fat	\$W	\$G	YG
Acc	Acc	Acc	Acc	Acc	Acc		Acc	Acc	Acc	Acc	\$F	\$QG	\$B
+8	+9	+69	+118	+11	+36	-20.59	+62	+57	+85	+0.052	+88.18	+29.37	-1.27
.37	.45	.35	.38	.20	.25		.27	.36	.33	.36	+76.68	+30.64	+149.26

6007	Tag: 6007	KM SpotLite 6007	18463066
	Tattoo: 6007	Bull	Birth Date: 01/07/16

Tehama 944 R525[AMF-CAF-XF]
 A & B SpotLite 3065[OHF]
 #A & B Queen 1021[OHF]
 #S A V Pioneer 7301[AMF-CAF-XF]
 KM Rita Belle 354
 +Destinys Rita of 4276 1314[AMF-DDF]

CED	BW	WW	YW	CEM	Milk	\$EN	CW	Marb	RE	Fat	\$W	\$G	YG
Acc	Acc	Acc	Acc	Acc	Acc		Acc	Acc	Acc	Acc	\$F	\$QG	\$B
+11	-4	+56	+107	+11	+31	-26.03	+40	+70	+40	+0.073	+53.68	+28.48	-6.32
.28	.36	.27	.26	.09	.12		.17	.21	.22	.19	+72.82	+34.80	+121.45

KM Cattle Company Top Cut Bull Sale

6008	Tag: 6008	KM Gronk 6008	18463054
	Tattoo: 6008	Bull i50K	Birth Date: 01/08/16

Connealy Capitalist 028[DDF-OSF]
 +Deer Valley Patriot 3222[DDF]
 +Deer Valley Rita 0274[DDC]
 #Triple E Special Addition[CAF]
 Flag Blue Lady 00509
 SCR Blue Lady 80684[AMF-CAF-NHF]

CED	BW	WW	YW	CEM	Milk	\$EN	CW	Marb	RE	Fat	\$W	\$G	YG
Acc	Acc	Acc	Acc	Acc	Acc		Acc	Acc	Acc	Acc	\$F	\$QG	\$B
-2	+3.8	+68	+123	+5	+23	-10.58	+41	+97	+69	+0.067	+58.54	+40.44	-1.19
.38	.44	.33	.36	.10	.17		.19	.30	.27	.30	+97.02	+41.63	+141.27

6012	Tag: 6012	KM Full Power 6012	18462919
	Tattoo: 6012	Bull	Birth Date: 01/18/16

+PA Power Tool 9108[AMF-CAF-XF]
 +PA Full Power 1208[AMF-CAF-XF]
 Pine View SQR Rita W091[CAF-DDF-NHF]
 KM Roughage Buster 93[AMF-CAF-XF]
 KM Rita Belle 4211
 +Destinys Rita of 4276 1314[AMF-DDF]

CED	BW	WW	YW	CEM	Milk	\$EN	CW	Marb	RE	Fat	\$W	\$G	YG
Acc	Acc	Acc	Acc	Acc	Acc		Acc	Acc	Acc	Acc	\$F	\$QG	\$B
+6	+6	+58	+102	+10	+32	-25.15	+31	+95	+62	+0.040	+58.35	+44.64	+3.42
.31	.37	.28	.28	.13	.17		.17	.21	.23	.19	+61.93	+41.22	+119.77

6009	Tag: 6009	KM Leverage 6009	18463003
	Tattoo: 6009	Bull	Birth Date: 01/14/16

Sitz Top Game 561X[DDF]
 JMB Traction 292[DDF]
 JMB Emulota 013[DDF]
 Y H Yahara 756
 #SCR Pamela Pride 80786[AMF-DDF-NHF]
 SCR Pamela Pride 60867[AMF-NHF]

CED	BW	WW	YW	CEM	Milk	\$EN	CW	Marb	RE	Fat	\$W	\$G	YG
Acc	Acc	Acc	Acc	Acc	Acc		Acc	Acc	Acc	Acc	\$F	\$QG	\$B
I+1	I+3.0	I+57	I+101	I+8	I+41	-26.09	I+47	I+.64	I+.99	I+.007	+69.13	+41.53	+8.54
.05	.05	.05	.05	.05	.05		.05	.05	.05	.05	+70.04	+32.99	+153.75

6013	Tag: 6013	KM Revolution 6013	18463694
	Tattoo: 6013	Bull i50K	Birth Date: 01/22/16

#MCC Daybreak[AMF-CAF-XF]
 +Quaker Hill Rampage 0A36[AMF-CAF-XF]
 +QHF Blackcap 6E2 of4V16 4355[DDF]
 +KM Broken Bow 002[AMF-CAF-XF]
 KM Lady 367
 +R B Lady Focus 013-830[OSF]

CED	BW	WW	YW	CEM	Milk	\$EN	CW	Marb	RE	Fat	\$W	\$G	YG
Acc	Acc	Acc	Acc	Acc	Acc		Acc	Acc	Acc	Acc	\$F	\$QG	\$B
+14	-5	+72	+119	+15	+32	-28.80	+55	+37	+1.21	-.027	+77.69	+35.62	+12.57
.39	.43	.32	.36	.10	.17		.23	.33	.30	.32	+86.65	+23.05	+156.08

6010	Tag: 6010	KM Leverage 6010	18463005
	Tattoo: 6010	Bull i50K	Birth Date: 01/14/16

Sitz Top Game 561X[DDF]
 JMB Traction 292[DDF]
 JMB Emulota 013[DDF]
 Y H Yahara 756
 #SCR Pamela Pride 80786[AMF-DDF-NHF]
 SCR Pamela Pride 60867[AMF-NHF]

CED	BW	WW	YW	CEM	Milk	\$EN	CW	Marb	RE	Fat	\$W	\$G	YG
Acc	Acc	Acc	Acc	Acc	Acc		Acc	Acc	Acc	Acc	\$F	\$QG	\$B
-4	+4.2	+52	+91	+6	+39	-18.58	+48	+67	+1.00	+0.017	+60.40	+41.45	+7.48
.33	.38	.31	.34	.09	.17		.20	.30	.27	.30	+57.05	+33.97	+155.36

6014	Tag: 6014	KM 18 Wheeler 6014	18462983 ^[OHP]
	Tattoo: 6014	Bull i50K	Birth Date: 01/25/16

Sitz Top Game 561X[DDF]
 JMB Traction 292[DDF]
 JMB Emulota 013[DDF]
 #Connealy Impression[AMF-CAF-XF]
 KM Erica 368[CAF]
 +Flag Erica 90668[CAC-AMF-NHF]

CED	BW	WW	YW	CEM	Milk	\$EN	CW	Marb	RE	Fat	\$W	\$G	YG
Acc	Acc	Acc	Acc	Acc	Acc		Acc	Acc	Acc	Acc	\$F	\$QG	\$B
+6	+2.1	+58	+107	+10	+36	-22.87	+40	+73	+1.34	-.007	+66.06	+49.94	+14.34
.39	.44	.33	.37	.11	.17		.21	.32	.29	.31	+79.89	+35.60	+151.57

6011	Tag: 6011	KM On Track 6011	18462992
	Tattoo: 6011	Bull i50K	Birth Date: 01/15/16

Sitz Top Game 561X[DDF]
 JMB Traction 292[DDF]
 JMB Emulota 013[DDF]
 #+S A V Bismarck 5682[AMF-CAF-XF]
 #KM Bismarck Queen May 180
 KM 004 Queen May 945

CED	BW	WW	YW	CEM	Milk	\$EN	CW	Marb	RE	Fat	\$W	\$G	YG
Acc	Acc	Acc	Acc	Acc	Acc		Acc	Acc	Acc	Acc	\$F	\$QG	\$B
+7	+3	+64	+110	+9	+41	-31.60	+46	+41	+1.25	-.010	+81.27	+37.68	+12.89
.39	.44	.34	.37	.11	.18		.21	.32	.29	.31	+81.64	+24.79	+149.55

6015	Tag: 6015	KM Battle Creek 6015	18465197 ^[OHP-CAF]
	Tattoo: 6015	Bull	Birth Date: 01/26/16

#Summitcrest Complete 1P55[AMF-CAF-XF]
 +KM Broken Bow 002[AMF-CAF-XF]
 #Summitcrest Princess 0P12
 #+BT Crossover 758N[AMC-NHC-XF]
 +Flag Erica 90668[CAC-AMF-NHF]
 #S A Erica 369[CAC-AMF]

CED	BW	WW	YW	CEM	Milk	\$EN	CW	Marb	RE	Fat	\$W	\$G	YG
Acc	Acc	Acc	Acc	Acc	Acc		Acc	Acc	Acc	Acc	\$F	\$QG	\$B
+12	-4	+50	+87	+13	+30	-14.82	+33	+64	+0.68	-.041	+53.37	+44.62	+11.63
.30	.37	.29	.29	.16	.21		.20	.24	.25	.21	+46.31	+32.99	+126.73

KM Cattle Company Top Cut Bull Sale

6016	Tag: 6016 Tattoo: 6016	KM Tension 6016 Bull	18462984 Birth Date: 01/27/16
-------------	---------------------------	--------------------------------	---

Sitz Top Game 561X[DDF]
 JMB Traction 292[DDF]
 JMB Emulota 013[DDF]
 Koupals B&B Identity[DDF]
 KM Queen May 352
 #+KM Queen May Alliance 510

CED	BW	WW	YW	CEM	Milk	\$EN	CW	Marb	RE	Fat	\$W	\$G	\$YG
Acc	Acc	Acc	Acc	Acc	Acc		Acc	Acc	Acc	Acc	\$F	\$QG	\$B
I+4	I+1.5	I+61	I+108	I+7	I+43	-38.25	I+56	I+.66	I+.87	I+.026	+72.33	+37.15	+3.52
.05	.05	.05	.05	.05	.05		.05	.05	.05	.05	+71.87	+33.63	+155.48

6020	Tag: 6020 Tattoo: 6020	KM Brewster 6020 Bull	18458533 [DDF] Birth Date: 02/01/16
-------------	---------------------------	---------------------------------	---

#Summitcrest Complete 1P55[AMF-CAF-XF]
 +KM Broken Bow 002[AMF-CAF-XF]
 #Summitcrest Princess 0P12
 Koupals B&B Identity[DDF]
 KM Queen May 351[DDC]
 #KM Queen May 936[DDC]

CED	BW	WW	YW	CEM	Milk	\$EN	CW	Marb	RE	Fat	\$W	\$G	\$YG
Acc	Acc	Acc	Acc	Acc	Acc		Acc	Acc	Acc	Acc	\$F	\$QG	\$B
I+10	I-.6	I+56	I+101	I+11	I+31	-23.26	I+36	I+.74	I+.51	I-.002	+56.75	+41.64	+5.72
.29	.37	.28	.28	.15	.19		.18	.22	.23	.20	+61.51	+35.92	+126.17

6017	Tag: 6017 Tattoo: 6017	KM Barnstormer 6017 Bull	18463707 Birth Date: 01/30/16
-------------	---------------------------	------------------------------------	---

#MCC Daybreak[AMF-CAF-XF]
 +Quaker Hill Rampage 0A36[AMF-CAF-XF]
 +QHF Blackcap 6E2 of 4V16 4355[DDF]
 BCC Jaf Upward 15X
 KM Lantz Blackcap 213-9700
 #+Flag Blackcap 90700

CED	BW	WW	YW	CEM	Milk	\$EN	CW	Marb	RE	Fat	\$W	\$G	\$YG
Acc	Acc	Acc	Acc	Acc	Acc		Acc	Acc	Acc	Acc	\$F	\$QG	\$B
I+6	I+1.5	I+72	I+126	I+9	I+35	-31.79	I+67	I+.71	I+1.49	I-.014	+78.21	+47.67	+12.55
.38	.44	.33	.37	.10	.17		.22	.32	.29	.32	+92.63	+35.12	+177.93

6021	Tag: 6021 Tattoo: 6021	KM Rise Up 6021 Bull	+18462948 Birth Date: 02/05/16
-------------	---------------------------	--------------------------------	--

#MCC Daybreak[AMF-CAF-XF]
 +G A R Sunrise[DDF]
 +G A R Objective R227
 #Mytty In Focus[AMF-CAF-XF]
 #KM Queen May 818
 #K M Total Queen May 666

CED	BW	WW	YW	CEM	Milk	\$EN	CW	Marb	RE	Fat	\$W	\$G	\$YG
Acc	Acc	Acc	Acc	Acc	Acc		Acc	Acc	Acc	Acc	\$F	\$QG	\$B
I+9	I+3.3	I+56	I+102	I+13	I+28	-19.15	I+48	I+.96	I+.34	I-.025	+44.75	+45.15	+3.75
.05	.42	.40	.36	.05	.21		.23	.26	.27	.24	+67.95	+41.40	+154.49

6018	Tag: 6018 Tattoo: 6018	KM Reservoir 6018 Bull	+18463716 [OHF] Birth Date: 01/30/16
-------------	---------------------------	----------------------------------	--

#B/R New Day 454[DDC-AMF-XF]
 +V A R Reserve 1111[AMF-CAF-XF]
 +Sandpoint Blackbird 8809[AMF]
 #C A Future Direction 5321[AMC-NHC-XF]
 +SCR Erica 50823[AMF-CAF-NHF]
 #S A Erica 369[CAC-AMF]

CED	BW	WW	YW	CEM	Milk	\$EN	CW	Marb	RE	Fat	\$W	\$G	\$YG
Acc	Acc	Acc	Acc	Acc	Acc		Acc	Acc	Acc	Acc	\$F	\$QG	\$B
I+6	I+1.8	I+41	I+71	I+8	I+36	-15.83	I+28	I+.74	I+.84	I-.011	+47.66	+47.46	+11.54
.05	.38	.30	.31	.05	.22		.21	.25	.27	.23	+26.10	+35.92	+119.32

6023	Tag: 6023 Tattoo: 6023	KM Impression 6023 Bull	18458535 [DDC-OHF] Birth Date: 02/12/16
-------------	---------------------------	-----------------------------------	---

#Connealy Impression[AMF-CAF-XF]
 +KM Impression 40
 #KM Queen May 818
 Connealy KW 1664 Consensus[DDC-OSF]
 +KM Erica 4204[DDC]
 +SCR Erica 50823[AMF-CAF-NHF]

CED	BW	WW	YW	CEM	Milk	\$EN	CW	Marb	RE	Fat	\$W	\$G	\$YG
Acc	Acc	Acc	Acc	Acc	Acc		Acc	Acc	Acc	Acc	\$F	\$QG	\$B
I+7	I+.5	I+57	I+95	I+12	I+33	-23.38	I+42	I+.46	I+.66	I+.024	+60.96	+30.44	+3.69
.26	.33	.22	.23	.09	.12		.13	.18	.19	.16	+49.70	+26.75	+123.51

6019	Tag: 6019 Tattoo: 6019	KM Caucus 6019 Bull	+18477577 Birth Date: 01/30/16
-------------	---------------------------	-------------------------------	--

#Connealy Consensus 7229[AMF-CAF-XF]
 Connealy Comrade 1385[DDF-OSF]
 Happy Gee of Conanga 919[DDC-CAF]
 Y H Yahara 756
 #SCR Pamela Pride 80786[AMF-DDF-NHF]
 SCR Pamela Pride 60867[AMF-NHF]

CED	BW	WW	YW	CEM	Milk	\$EN	CW	Marb	RE	Fat	\$W	\$G	\$YG
Acc	Acc	Acc	Acc	Acc	Acc		Acc	Acc	Acc	Acc	\$F	\$QG	\$B
I+9	I+.0	I+44	I+82	I+13	I+32	-12.90	I+26	I+.83	I+.65	I+.054	+49.85	+41.32	+3.07
.05	.38	.30	.30	.05	.17		.19	.23	.25	.21	+43.85	+38.25	+111.40

6024	Tag: 6024 Tattoo: 6024	KM Rampage 6024 Bull	18463711 Birth Date: 02/13/16
-------------	---------------------------	--------------------------------	---

#MCC Daybreak[AMF-CAF-XF]
 +Quaker Hill Rampage 0A36[AMF-CAF-XF]
 +QHF Blackcap 6E2 of 4V16 4355[DDF]
 KM Roughage Buster 93[AMF-CAF-XF]
 KM Queen May 190
 K M Queen May Exceed 930[AMF-CAF]

CED	BW	WW	YW	CEM	Milk	\$EN	CW	Marb	RE	Fat	\$W	\$G	\$YG
Acc	Acc	Acc	Acc	Acc	Acc		Acc	Acc	Acc	Acc	\$F	\$QG	\$B
I+7	I+1.4	I+56	I+99	I+10	I+28	-18.23	I+53	I+.43	I+.95	I-.023	+51.93	+35.42	+9.83
.29	.37	.29	.29	.10	.14		.16	.20	.22	.18	+58.39	+25.59	+147.67

KM Cattle Company Top Cut Bull Sale

6025	Tag: 6025 Tattoo: 6025	KM Burwell 6025 Bull	18458536 Birth Date: 02/13/16
-------------	---------------------------	--------------------------------	---

#Summitcrest Complete 1P55[AMF-CAF-XF]
 +KM Broken Bow 002[AMF-CAF-XF]
 #Summitcrest Princess 0P12
 #+S A V Mandan 5664[AMF-CAF-XF]
 #+Flag Blackcap 90700
 B/R Lantz Blackcap 1157[DDF]

CED	BW	WW	YW	CEM	Milk	\$EN	CW	Marb	RE	Fat	\$W	\$G	YG
Acc	Acc	Acc	Acc	Acc	Acc		Acc	Acc	Acc	Acc	\$F	\$QG	\$B
+5	+9	+55	+95	+8	+32	-20.39	+39	+51	+88	-0.01	+58.03	+37.97	+9.33
.30	.37	.29	.29	.16	.21		.19	.23	.24	.21	+59.20	+28.64	+134.34

6030	Tag: 6030 Tattoo: 6030	KM Caucus 6030 Bull	+18477573 Birth Date: 03/02/16
-------------	---------------------------	-------------------------------	--

#Connealy Consensus 7229[AMF-CAF-XF]
 Connealy Comrade 1385[DDF-OSF]
 Happy Gee of Conanga 919[DCC-CAF]
 Y H Yahara 756
 #SCR Pamela Pride 80786[AMF-DDF-NHF]
 SCR Pamela Pride 60867[AMF-NHF]

CED	BW	WW	YW	CEM	Milk	\$EN	CW	Marb	RE	Fat	\$W	\$G	YG
Acc	Acc	Acc	Acc	Acc	Acc		Acc	Acc	Acc	Acc	\$F	\$QG	\$B
I+9	-3	+45	+87	I+13	+32	-14.82	+31	+75	+83	+0.61	+49.95	+39.72	+3.56
.05	.38	.30	.30	.05	.17		.19	.23	.25	.21	+52.14	+36.16	+120.87

6026	Tag: 6026 Tattoo: 6026	KM Impression 6026 Bull	18528593 Birth Date: 02/16/16
-------------	---------------------------	-----------------------------------	---

#Connealy Impression[AMF-CAF-XF]
 +KM Impression 40
 #KM Queen May 818
 #Connealy Impression[AMF-CAF-XF]
 +KM Queen May 4218
 #KM Queen May 818

CED	BW	WW	YW	CEM	Milk	\$EN	CW	Marb	RE	Fat	\$W	\$G	YG
Acc	Acc	Acc	Acc	Acc	Acc		Acc	Acc	Acc	Acc	\$F	\$QG	\$B
+8	+1.0	+57	+87	+13	+24	-7.18	+19	+21	+52	-0.25	+56.02	+26.64	+10.78
.27	.33	.23	.23	.10	.12		.14	.19	.20	.17	+35.24	+15.86	+73.43

6032	Tag: 6032 Tattoo: 6032	KM Caucus 6032 Bull i50K	+18477575 Birth Date: 03/05/16
-------------	---------------------------	------------------------------------	--

#Connealy Consensus 7229[AMF-CAF-XF]
 Connealy Comrade 1385[DDF-OSF]
 Happy Gee of Conanga 919[DCC-CAF]
 Y H Yahara 756
 #SCR Pamela Pride 80786[AMF-DDF-NHF]
 SCR Pamela Pride 60867[AMF-NHF]

CED	BW	WW	YW	CEM	Milk	\$EN	CW	Marb	RE	Fat	\$W	\$G	YG
Acc	Acc	Acc	Acc	Acc	Acc		Acc	Acc	Acc	Acc	\$F	\$QG	\$B
+10	-1.5	+48	+89	+13	+31	-4.14	+32	+85	+85	+0.85	+64.85	+39.24	+51
.33	.44	.34	.37	.12	.20		.23	.33	.31	.32	+55.77	+38.73	+124.52

6027	Tag: 6027 Tattoo: 6027	KM Obligation 6027 Bull	18465198 Birth Date: 02/17/16
-------------	---------------------------	-----------------------------------	---

+KM Obligation 256
 KM Obligation 4128
 #SCR Pamela Pride 80786[AMF-DDF-NHF]
 #Connealy Stimulus 8419[AMF-CAF-XF]
 KM Blue Lady 201
 Flag Blue Lady 00509

CED	BW	WW	YW	CEM	Milk	\$EN	CW	Marb	RE	Fat	\$W	\$G	YG
Acc	Acc	Acc	Acc	Acc	Acc		Acc	Acc	Acc	Acc	\$F	\$QG	\$B
+1	+2.5	+55	+98	+7	+28	-17.66	+37	+73	+57	-0.22	+47.44	+43.77	+8.17
.20	.32	.21	.21	.07	.10		.10	.15	.15	.13	+56.65	+35.60	+129.08

6033	Tag: 6033 Tattoo: 6033	KM Caucus 6033 Bull i50K	+18477576 Birth Date: 03/06/16
-------------	---------------------------	------------------------------------	--

#Connealy Consensus 7229[AMF-CAF-XF]
 Connealy Comrade 1385[DDF-OSF]
 Happy Gee of Conanga 919[DCC-CAF]
 Y H Yahara 756
 #SCR Pamela Pride 80786[AMF-DDF-NHF]
 SCR Pamela Pride 60867[AMF-NHF]

CED	BW	WW	YW	CEM	Milk	\$EN	CW	Marb	RE	Fat	\$W	\$G	YG
Acc	Acc	Acc	Acc	Acc	Acc		Acc	Acc	Acc	Acc	\$F	\$QG	\$B
+9	-1	+53	+97	+12	+33	-11.83	+35	+89	+76	+0.75	+67.33	+39.84	-.01
.33	.44	.34	.37	.12	.20		.23	.33	.31	.32	+66.18	+39.85	+131.73

6029	Tag: 6029 Tattoo: 6029	KM Impression 6029 Bull	18458538 [AMF] Birth Date: 02/24/16
-------------	---------------------------	-----------------------------------	---

#Connealy Impression[AMF-CAF-XF]
 +KM Impression 40
 #KM Queen May 818
 +KM Broken Bow 002[AMF-CAF-XF]
 KM Lady Jewell 4207[AMC]
 Flag Crossover 90104[AMC-NHF]

CED	BW	WW	YW	CEM	Milk	\$EN	CW	Marb	RE	Fat	\$W	\$G	YG
Acc	Acc	Acc	Acc	Acc	Acc		Acc	Acc	Acc	Acc	\$F	\$QG	\$B
+6	+1.7	+54	+92	+11	+25	-10.79	+30	+56	+41	-0.27	+48.57	+38.38	+8.00
.26	.33	.22	.22	.09	.12		.13	.18	.18	.16	+46.35	+30.38	+109.33

6034	Tag: 6034 Tattoo: 6034	KM Obligation 6034 Bull	18504693 [DDP] Birth Date: 03/09/16
-------------	---------------------------	-----------------------------------	---

+KM Obligation 256
 KM Obligation 4128
 #SCR Pamela Pride 80786[AMF-DDF-NHF]
 #G A R Predestined[DCC-AMF-XF]
 KM Princess 378[DDC]
 #Summitcrest Princess 0P12

CED	BW	WW	YW	CEM	Milk	\$EN	CW	Marb	RE	Fat	\$W	\$G	YG
Acc	Acc	Acc	Acc	Acc	Acc		Acc	Acc	Acc	Acc	\$F	\$QG	\$B
+6	+1.0	+52	+86	+11	+25	-8.09	+31	+76	+29	-0.04	+49.70	+40.62	+4.17
.20	.32	.21	.21	.08	.10		.11	.16	.16	.14	+36.91	+36.45	+112.22

KM Cattle Company Top Cut Bull Sale

6035	Tag: 6035	KM Impression 6035	18458540_[OHP]
	Tattoo: 6035	Bull	Birth Date: 03/12/16

#Connealy Impression[AMF-CAF-XF]
 +KM Impression 40
 #KM Queen May 818
 Connealy KW 1664 Consensus[DDC-OSF]
 +KM Erica 4228[DDF]
 +SCR Erica 50823[AMF-CAF-NHF]

CED	BW	WW	YW	CEM	Milk	\$EN	CW	Marb	RE	Fat	\$W	\$G	\$YG
Acc	Acc	Acc	Acc	Acc	Acc		Acc	Acc	Acc	Acc	\$F	\$QG	\$B
+5	+2.5	+55	+86	+11	+32	-17.88	+39	+49	+62	+0.03	+56.21	+33.93	+6.03
.26	.33	.22	.23	.09	.12		.13	.18	.19	.16	+34.83	+27.90	+120.10

6039	Tag: 6039	KM Obligation 6039	18458544
	Tattoo: 6039	Bull	Birth Date: 04/26/16

+KM Obligation 256
 KM Obligation 4128
 #SCR Pamela Pride 80786[AMF-DDF-NHF]
 +KM Broken Bow 002[AMF-CAF-XF]
 KM Queen May 363
 KM Queen May 190

CED	BW	WW	YW	CEM	Milk	\$EN	CW	Marb	RE	Fat	\$W	\$G	\$YG
Acc	Acc	Acc	Acc	Acc	Acc		Acc	Acc	Acc	Acc	\$F	\$QG	\$B
I+4	I+1.2	I+57	I+100	I+9	I+28	-18.57	I+36	I+.60	I+.54	I-.019	+53.45	+39.41	+7.72
.05	.05	.05	.05	.05	.05		.05	.05	.05	.05	+58.93	+31.69	+123.48

As of 02/02/17

6036	Tag: 6036	KM Impression 6036	18465200
	Tattoo: 6036	Bull	Birth Date: 03/25/16

#Connealy Impression[AMF-CAF-XF]
 +KM Impression 40
 #KM Queen May 818
 +KM Broken Bow 002[AMF-CAF-XF]
 KM Blue Lady 4214
 KM Blue Lady 201

CED	BW	WW	YW	CEM	Milk	\$EN	CW	Marb	RE	Fat	\$W	\$G	\$YG
Acc	Acc	Acc	Acc	Acc	Acc		Acc	Acc	Acc	Acc	\$F	\$QG	\$B
I+8	I+.4	I+59	I+100	I+12	I+27	-17.18	I+29	I+.47	I+.55	I-.030	+56.90	+37.11	+9.94
.05	.05	.05	.05	.05	.05		.05	.05	.05	.05	+57.49	+27.17	+107.84

6037	Tag: 6037	KM Broken Bow 6037	18458542_[DDP]
	Tattoo: 6037	Bull	Birth Date: 04/03/16

#Summitcrest Complete 1P55[AMF-CAF-XF]
 +KM Broken Bow 002[AMF-CAF-XF]
 #Summitcrest Princess 0P12
 Ironwood NL 487 6370 7557
 KM Pride 374
 Wardens Pride 4082 9018

CED	BW	WW	YW	CEM	Milk	\$EN	CW	Marb	RE	Fat	\$W	\$G	\$YG
Acc	Acc	Acc	Acc	Acc	Acc		Acc	Acc	Acc	Acc	\$F	\$QG	\$B
I+9	I+0	I+54	I+86	I+10	I+27	-10.43	I+25	I+.51	I+.53	I-.022	+56.57	+38.27	+9.63
.05	.05	.05	.05	.05	.05		.05	.05	.05	.05	+49.45	+28.64	+111.79

6038	Tag: 6038	KM Obligation 6038	18504695
	Tattoo: 6038	Bull	Birth Date: 04/13/16

+KM Obligation 256
 KM Obligation 4128
 #SCR Pamela Pride 80786[AMF-DDF-NHF]
 +KM Broken Bow 002[AMF-CAF-XF]
 KM Lady 366
 +R B Lady Focus 013-830[OSF]

CED	BW	WW	YW	CEM	Milk	\$EN	CW	Marb	RE	Fat	\$W	\$G	\$YG
Acc	Acc	Acc	Acc	Acc	Acc		Acc	Acc	Acc	Acc	\$F	\$QG	\$B
I+6	I+1.0	I+57	I+96	I+11	I+29	-18.14	I+34	I+.61	I+.44	I+.003	+56.46	+36.75	+4.70
.05	.05	.05	.05	.05	.05		.05	.05	.05	.05	+51.53	+32.05	+116.20



EASIER CALVING. MORE GROWTH. BETTER MARBLING.

**That's the power of the reliable,
registered Angus bull.**

Some breeds talk about superior genetic merit. Registered Angus bulls prove it.

They simply outperform the competition in calving ease, growth and marbling, according to USDA research.*

That's proof that the registered Angus bull you purchase comes with power and predictability, backed by a better balance of the traits you need to get profitable results.

An extensive, multi-year study shows Angus calves earn you more at sale time than similar calves of all other breeds – nearly \$7/cwt.^b more, on average. In fact, packers pay Angus producers \$1 million in premiums per week.^c

That's a lot of value brought to you by reliable, registered Angus bulls.

Anything else is just hype.

ANGUS MEANS BUSINESS.

USDA analysis shows the
superiority of Angus at every stage.

BREED	BW	YW	MARB
Angus	1.3	91	0.59
Hereford	5.6	50	-0.22
Red Angus	1.2	53	0.18
Simmental	5.1	80	-0.20

*Average 2014-born bulls sold to Angus base, U.S. Meat Animal Research Center Across-breed EPD Adjustments, BF 2016. ^bHere's the Premium study 2014, Certified Angus Beef LLC. ^cPacker Premium Survey 2015, Certified Angus Beef LLC.

To subscribe to the *Angus Journal*[®],
call 816.383.5200.

Watch *The Angus Report* 7:30 a.m. CST
every Monday on RFD-TV.

ANGUS
THE BUSINESS BREED

3201 Frederick Ave. | St. Joseph, MO 64506
www.ANGUS.org

© 2015-2017 American Angus Association[®]



Kent Musfeldt

30436 335th St.

Coon Rapids, IA 50058

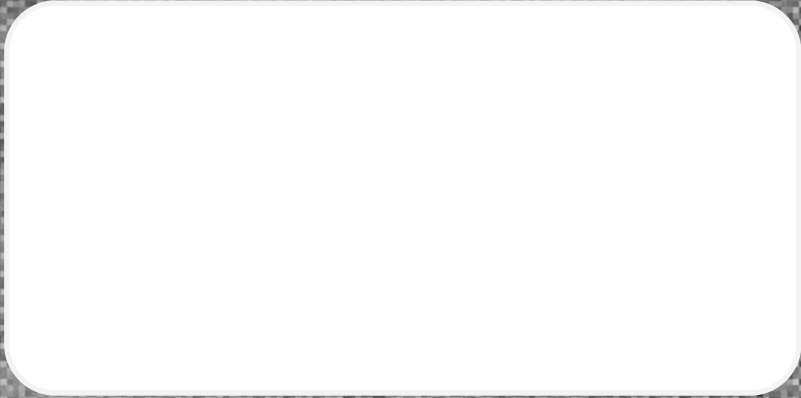
712-210-1170

kmcattle@iowatelecom.net

Kyle Musfeldt

712-210-6222

kmcattle.kyle@gmail.com



KM Essential 6003

Maternal Brother to JMB Traction (Select Sires)

An elite powerhouse of a bull



KM Barnstormer 6017

Rampage from the B/R Lantz Blackcap

cow family. His data is wild!



KM On Track 6011

Traction from a Queen May x Bismarck



KM Blue Blood 6002

Most powerful Broken Bow son we've raised

These Better Business Bulls SELL